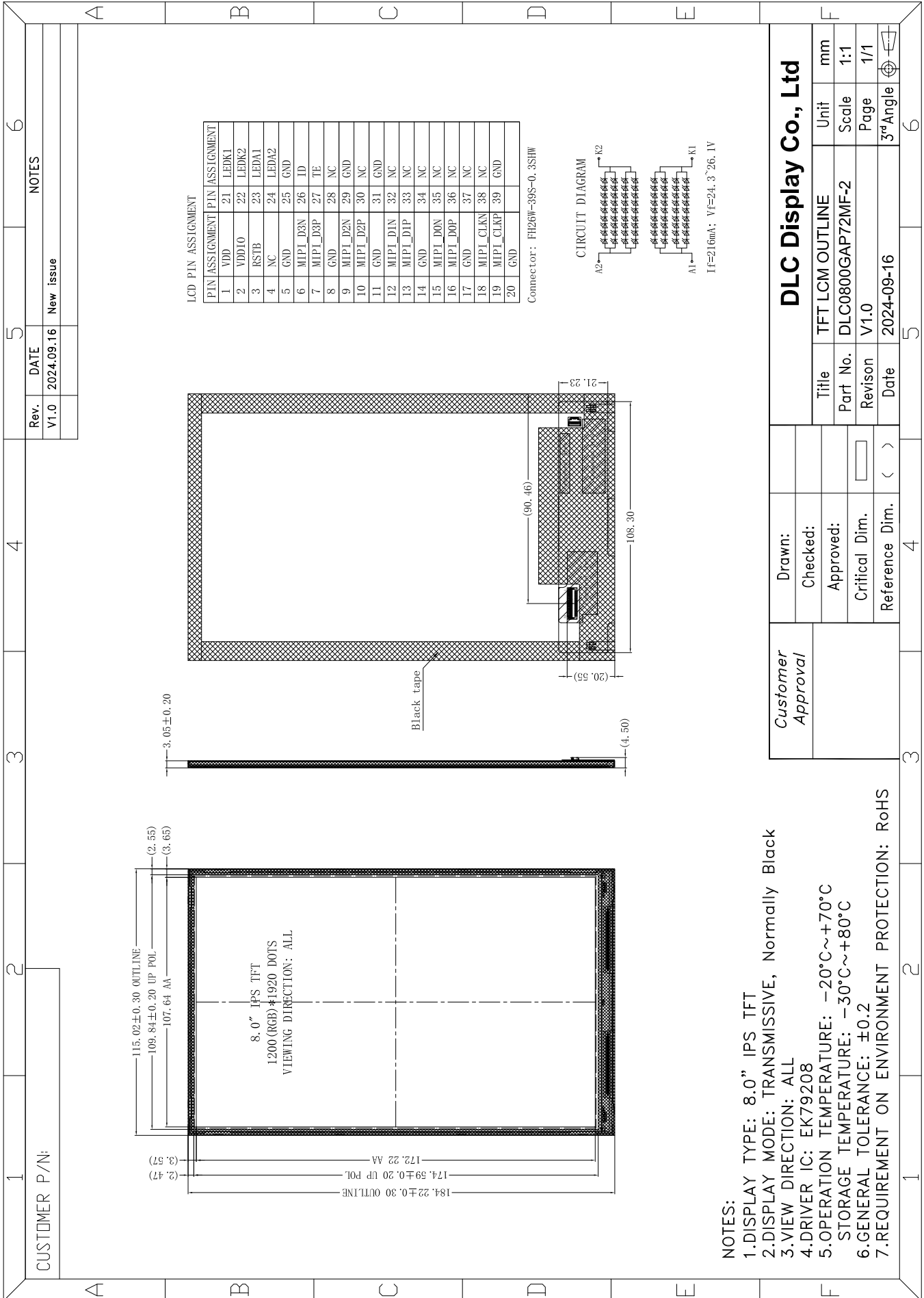


Outline Drawing



NOTES:

- 1.DISPLAY TYPE: 8.0" IPS TFT
- 2.DISPLAY MODE: TRANSMISSIVE, Normally Black
- 3.VIEW DIRECTION: ALL
- 4.DRIVER IC: EK79208
- 5.OPERATION TEMPERATURE: -20°C~+70°C
- 6.STORAGE TEMPERATURE: -30°C~+80°C
- 7.GENERAL TOLERANCE: ±0.2
- 7.REQUIREMENT ON ENVIRONMENT PROTECTION: RoHS

Customer Approval	Drawn:	DLC Display Co., Ltd		
	Checked:	Title	TFT LCM OUTLINE	Unit mm
	Approved:	Part No.	DLC0800GAP72MF-2	Scale 1:1
	Critical Dim.	Revision	V1.0	Page 1/1
	Reference Dim.	Date	2024-09-16	3rd Angle