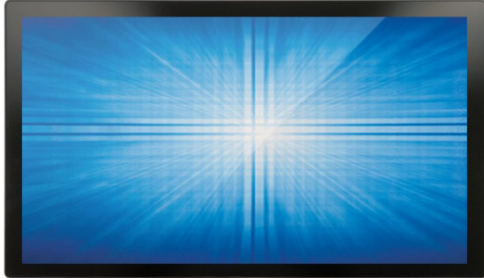


## GMSPCT01-27T-03



### General Description:

**GMSPCT01-27T-03** is one of High-brightness industrial grade touch monitor that using the 6mm projected capacitive Touchscreen, it supports Win7, Win8, Android & Linux by multi-touch function, widely apply to various industrial, commercial and medical devices.

### Main Features:

- 1200cd/m<sup>2</sup> High brightness ultra-low power LED backlight
- AG70±10 Cover-glass supports directly sun-readable
- LCD & 6mm Touch are OCR optical bonded
- UV resistance for LCD touch monitor
- IP65 front design & 6mm glass for anti-vandal
- 27" LCD panel passed the IEC 68068-2-5: Procedure Sa1

### Technical details

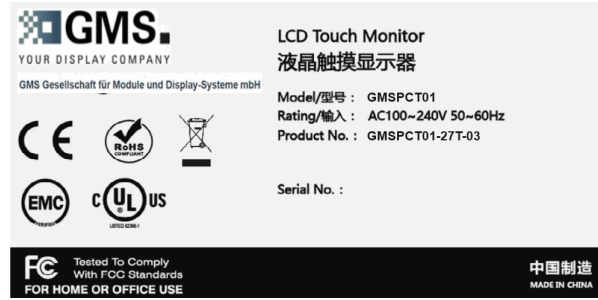
Product	27" High brightness outdoor LCD touch monitor	
<b>27" LCD SPEC</b> (DV270FHM-R01)	Display Ratio	16:9
	Backlight	LED
	MTBF	50000Hrs
	Active Area	597.888 * 336.312 mm (H×V)
	Viewing Angle	89°/89° (Left / Right), 89°/89° (Vertical / Horizontal)
	Support Color	8-bit color depth, 16.7M colors
	Optical Response Time	Typ. 20ms
	White Luminance	Typ.1500cd/ m <sup>2</sup> (after 6mm PCAP Touch Min.1200cd/m <sup>2</sup> )
	Contrast Ratio	Typ.3000:1
	Display Resolution	1920*1080 / 60Hz (Best), 70Hz

<b>PCAP Touch Panel</b> (Customized made)	Type	Projected Capacitive Multi-Points Touch Panel (EETI 80H84 controller)
	Size	27inch
	Active Area	598.00mm×336.40mm
	Total Thickness	6mm Cover glass Antiglare Gloss AG70±10 with reflection<15%
	Glass Safety	Compliance with P1A, EN 356 : 1999 Classifications
	Anti-vandal Treatment	100% Physical tempered glass
	Anti-scratch resistance	7H
	Lamination to LCD	Optical bonding (Thickness = 1.0mm, AB glue)
	Interface Type	USB2.0
	Touch Points	10 points
	Response Time	≤10ms
	Linearity	≤2%
	Minimum Touch Diameter	1.5mm
	Touch Strength	≤10g
	Touch Panel Life Time	≥200 million Touches
Touch Operation	Finger or touch pen	
Compatible O/S	WinXP, Win7, Win8, Windows10, Android, Linux	

<b>Touch Monitor Specification</b>	Outline Dimension	651.00mm×389.00mm×64.00mm
	Product Construction	With Aluminum alloy metal frame
	Product Color	Black (Anodic oxidation for bezel, spray painting for housing)
	Environment Parameter	Operation: -20°C ~85°C, Storage: -30°C ~85°C Operation Humidity: 20%~90%
	Interface	VGA, HDMI(DDC/CI), DVI, Phoenix 15EDGA-3.81 (3 Pins for light sensor)
	IK / IP Protection Level	IK10 / IP65 (front)
	Heat Radiation	Active Cooling (2*cooling fans: hot air out) Fans operating: LCD monitor≥45°C, Fans stop: LCD monitor≤40°C
	Input Voltage	110~220Vac
	Power Consumption	70 Watts (typ.) / 80 Watts (Max.) @ 100% brightness
	LCD Brightness Control	Automatic adjusting by external Light sensor
	Warranty	12 months
	Shipping Weight	(75.5*21.5*51)cm per carton = 2*27" LCD monitor, G.W.=27.84Kg.

Suggestion of cleaning liquid for LCD monitor: Ethyl Acetate

## Product Label



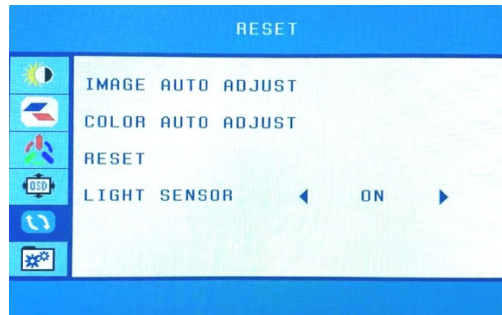
## Technical improvements of GMSPCT-03 01-27

1. New LCD polarizer support up to +85°C operating temperature for direct sunlight.
2. New LCD passed the IEC 68068-2-5: Solar simulation climate aging test (3 cycles of 24-Hour @ Angle of incidence of the radiation: 4°+ -15°, Energy: 1090W/m<sup>2</sup>, Air flow speed: reduced, Procedure Sa1)

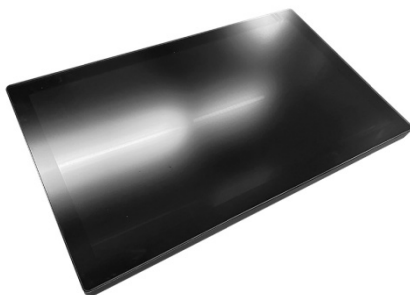
## Accessories

EU power cable	AC-03-1500-V3.0	*1 Pcs	1500mm length
USB Touch cable	USB-05-1800-V1.1	*1 Pcs	1800mm length
HDMI cable	HDMI-19-1800-V1.1	*1 Pcs	1800mm length
External Light sensor	Light sensor	*1 Pcs	800mm length

## Light Sensor ON / OFF



## Product photo



**Technical drawing**

