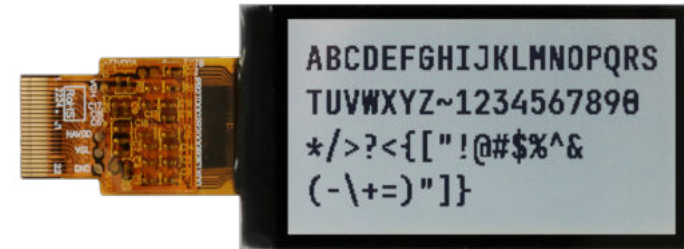


NEW Mono TFT with LPRD

Winstar introduced the **NEW 2.13" Portrait Mode Mono TFT display with LPRD (Low Power Reflective LCD)** with a resolution of 122x250 pixels, built in drive IC and SPI interface. The display is sunlight readable, making it suitable for outdoor application, vivid color, UV resistance, extra low power consumption, fast refresh rate, making it suitable for dynamic information displays. Most suitable for outdoor applications, smart retail devices, handheld devices, transportation such as EV charging, and wearable/portable devices.



Operating Temperatures from -20°C to +70°C.
Storage Temperatures from -30°C to +80°C.

WF22GN5AB2DNN0

Item	Contents	Unit
Size	2.13	inch
Dot Matrix	122 x 250	dots
Module Dimension	27.07(W) x 56.2 (H) x 1.09 (D)	mm
Active Area	23.668 x 48.50	mm
Pixel Pitch	0.194 x 0.194	mm
LCD Type	Mono TFT (Reflective type)	----
Viewing Angle	65/65/65/65	----
Aspect Ratio	18:9	----
Driver IC	ST7306 or Equivalent	----
Interface	8bit MCU/4-SPI/3-SPI	----
Touch Panel	Without Touch Panel	----
Surface	Anti-Glare	----