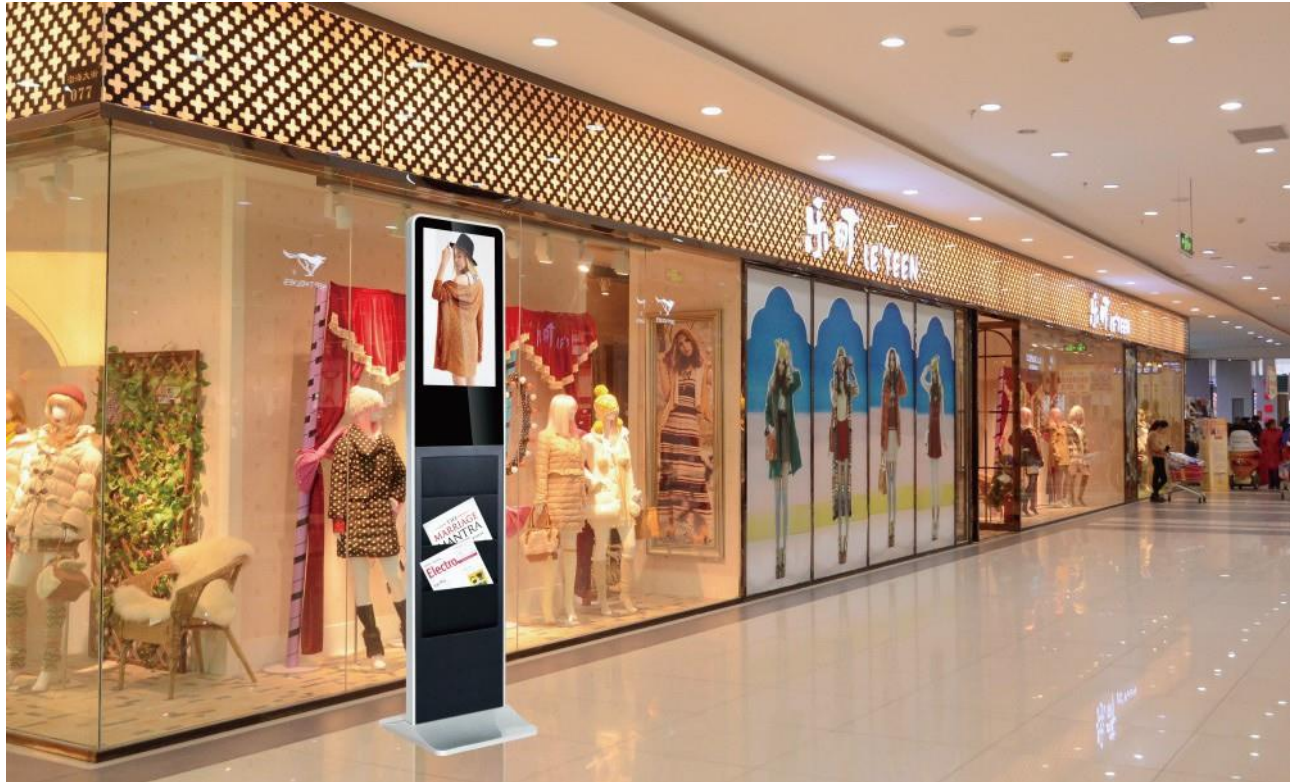


21.5" Android Network Digital Signage

GMS-215LPTAZ-PCAP

Right Message At Right Time



Digital Signage is the remote-controlled distribution and playback of digital content (TV programs, advertising, menus, and every sort of information) on networks of displays. These displays can range from digital billboards to much smaller screens, either at a single location or across multiple sites. It's all about targeting the audience with relevant information. Digital signage enables users to display their messages more dynamically and targeted.

We have demonstrated a Digital Signage application on android platform. The application provides the features of updating the content from remote web browser, playback of video content, image, HTML web pages and scrolling text messages.

Key Features:

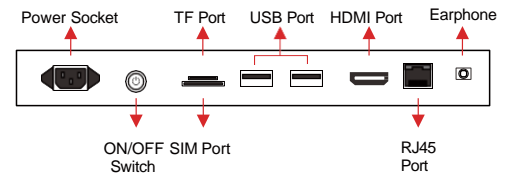
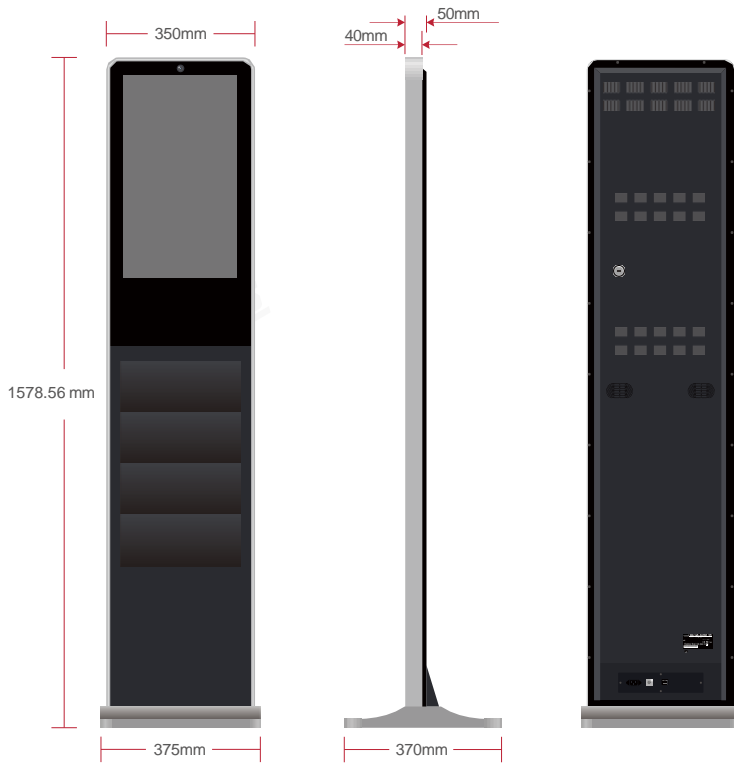
- Android 11 Operating System
- RK3399, Dual-core Cortex-A72 Up to 1.8 GHz and Quad-core Cortex-A53 Up to 1.4 GHz
- 4GB LP DDR4 + 32GB Flash
- 802.11 B/G/N/AC Internal Wi-Fi
- 4G/Wi-Fi/WLAN Network Connection
- Remote Management Software
- Portrait & Landscape Display Mode
- 1080P Display Output
- Capacitive Touch

Key Features:

- POS
- Hotel
- Self-service Terminal
- Public Information Display
- Hospitality
- In-vehicles and Transportation

21.5" Android Network Digital Signage

GMS-215LPTAZ-PCAP



Specifications

PANEL	Panel Model	21.5 inch TFT LED	HDMI DISPLAY	Output Mode	HDMI 480P HDMI 576P HDMI 720P 50 Hz HDMI 720P 60 Hz HDMI 1080I 50 Hz HDMI 1080I 60 Hz HDMI 1080P 24 Hz HDMI 1080P 50 Hz HDMI 1080P 60 Hz
	Max Resolution	1920x1080		ON-SCREEN DISPLAY LANGUAGES	English, French, German, Italian, Polish, Russian, Simplified Chinese, Spanish, Turkish, Arabic, Japanese, Traditional Chinese etc.
	Aspect Ratio	16:09	DISPLAY MODE	Portrait & Landscape	
	Pixel Pitch	0.24795x0.24795	TOUCH	Capacitive Touch	
	Viewing Angle	89/89/89/89	POWER	Mains Power Consumption AC 100-240 V, 50-60 Hz 28 W	
	Contrast Ratio	1000:1	SOUND	Built-in Speakers 2x5 W	
	Brightness	500 cd/m ²	DIMENSION & WEIGHT	Machine Size	1578.56x50x375 mm 370x50x375 mm(stand base)
	Response Time	14 ms		Machine Weight	24.5 kg
	Display Area (mm)	476.064x267.786 mm	Carton Size	1690x440x630 mm	
	Panel Size (mm)	495.6x292.2x10.7 mm	Carton Weight	61 kg	
	Screen Weight	2 kg	OTHER	Regulatory Approvals Warranty	CE, FCC, ROHS 1 year warranty
	Lamp Type	WLED	ACCESSORIES	Included	Remote Control, Power supply, User manual, Keys, Screws
INTERNAL MEDIA PLAYER	CPU	Dual-core Cortex-A72 Up to 1.8 GHz and Quad-core Cortex-A53 Up to 1.4 GHz			
	GPU	ARM Mali-T860			
	RAM	LP DDR4 4GB			
	ROM	32GB			
	OS	Android 11			
CONNECTOR	USB 2.0	x1			
	USB 3.0	x1			
	HDMI 2.0 (output)	x1			
	RJ45	x1			
	TF Card	x1			
	SIM Card (optional)	x1			
CONNECTIVITY	LAN	100/1000M			
	WiFi	Built-in Wi-Fi 802.11 B/G/N/AC			
	4G (Optional)	LTE			
FILE SUPPORT	Video	H.264, MKV, WMV9, MPEG 1/2/4, HD Divx, Xvid, RM/RMVB;			
	Image	BMP/PNG/JPEG			
	Audio	Mp3, WMA, WAV, APE, FLAC, AAC, OGG, M4A, 3GPP			
	Scrolling Text	txt			