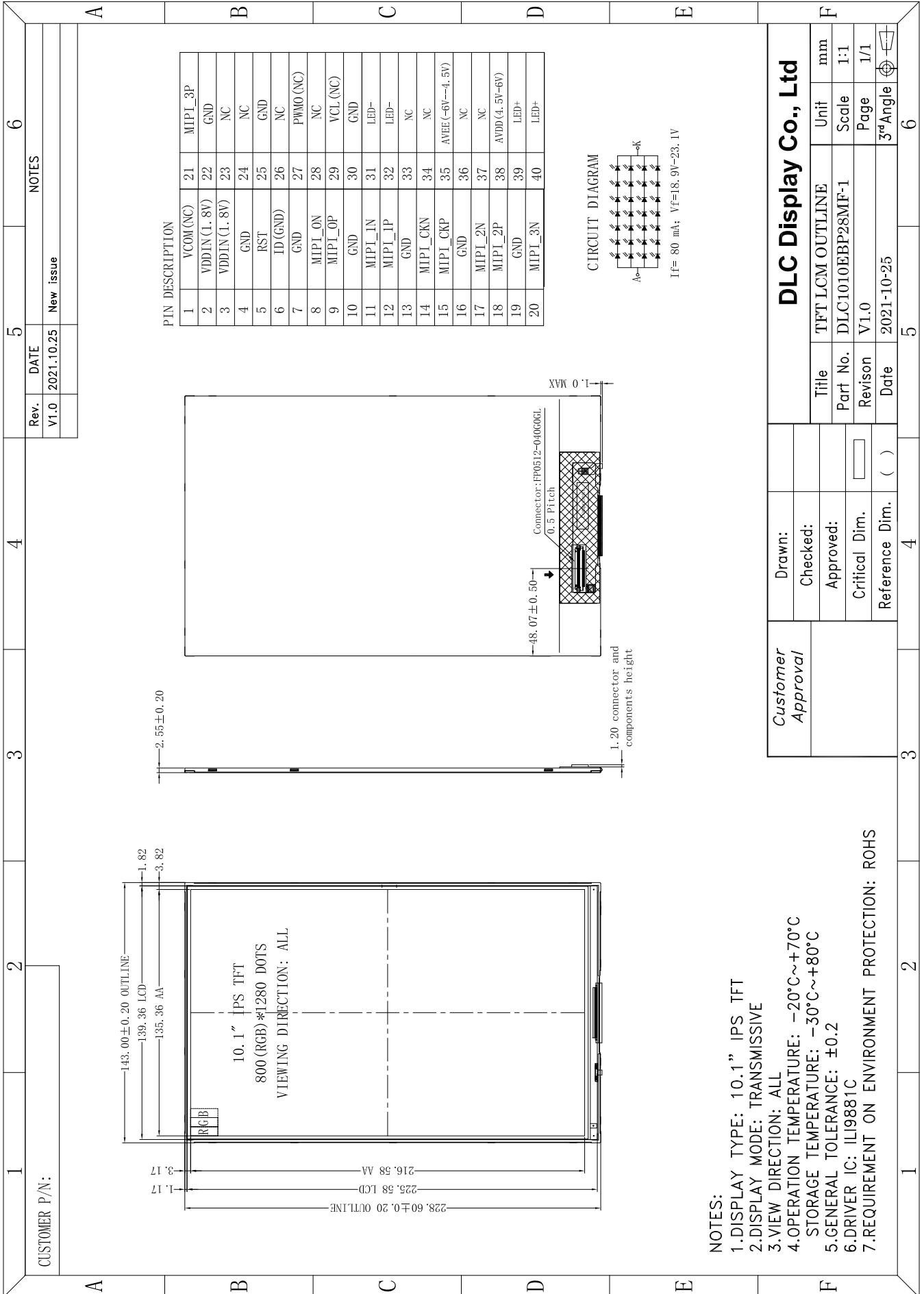


Outline Drawing



PIN DESCRIPTION	
1	VCOM(NC)
2	VDDIN (1.8V)
3	VDDIN (1.8V)
4	GND
5	RST
6	ID(GND)
7	GND
8	MIPI_ON
9	MIPI_OP
10	GND
11	MIPI_IN
12	MIPI_IP
13	GND
14	MIPI_CKN
15	MIPI_CKP
16	GND
17	MIPI_2N
18	MIPI_2P
19	GND
20	MIPI_3N
21	MIPI_3P
22	GND
23	NC
24	NC
25	GND
26	NC
27	PWM0 (NC)
28	NC
29	VCL (NC)
30	GND
31	LED-
32	LED-
33	NC
34	NC
35	AVEE (-6V~4.5V)
36	NC
37	NC
38	AVDD (4.5V~6V)
39	LED+
40	LED+

CIRCUIT DIAGRAM



If= 80 mA; Vf=18, 9V~23.1V

NOTES:

- 1.DISPLAY TYPE: 10.1" IPS TFT
- 2.DISPLAY MODE: TRANSMISSIVE
- 3.VIEW DIRECTION: ALL
- 4.OPERATION TEMPERATURE: -20°C~+70°C
- 5.STORAGE TEMPERATURE: -30°C~+80°C
- 6.GENERAL TOLERANCE: ±0.2
- 7.DRIVER IC: ILI9881C
- 7.REQUIREMENT ON ENVIRONMENT PROTECTION: ROHS

DLC Display Co., Ltd	
Drawn:	Title
Checked:	TFT LCM OUTLINE
Approved:	Part No.
Critical Dim.	Revision
Reference Dim.	Date
Customer Approval	Unit
()	mm
()	Scale
()	1:1
()	Page
()	1/1
()	3rd Angle