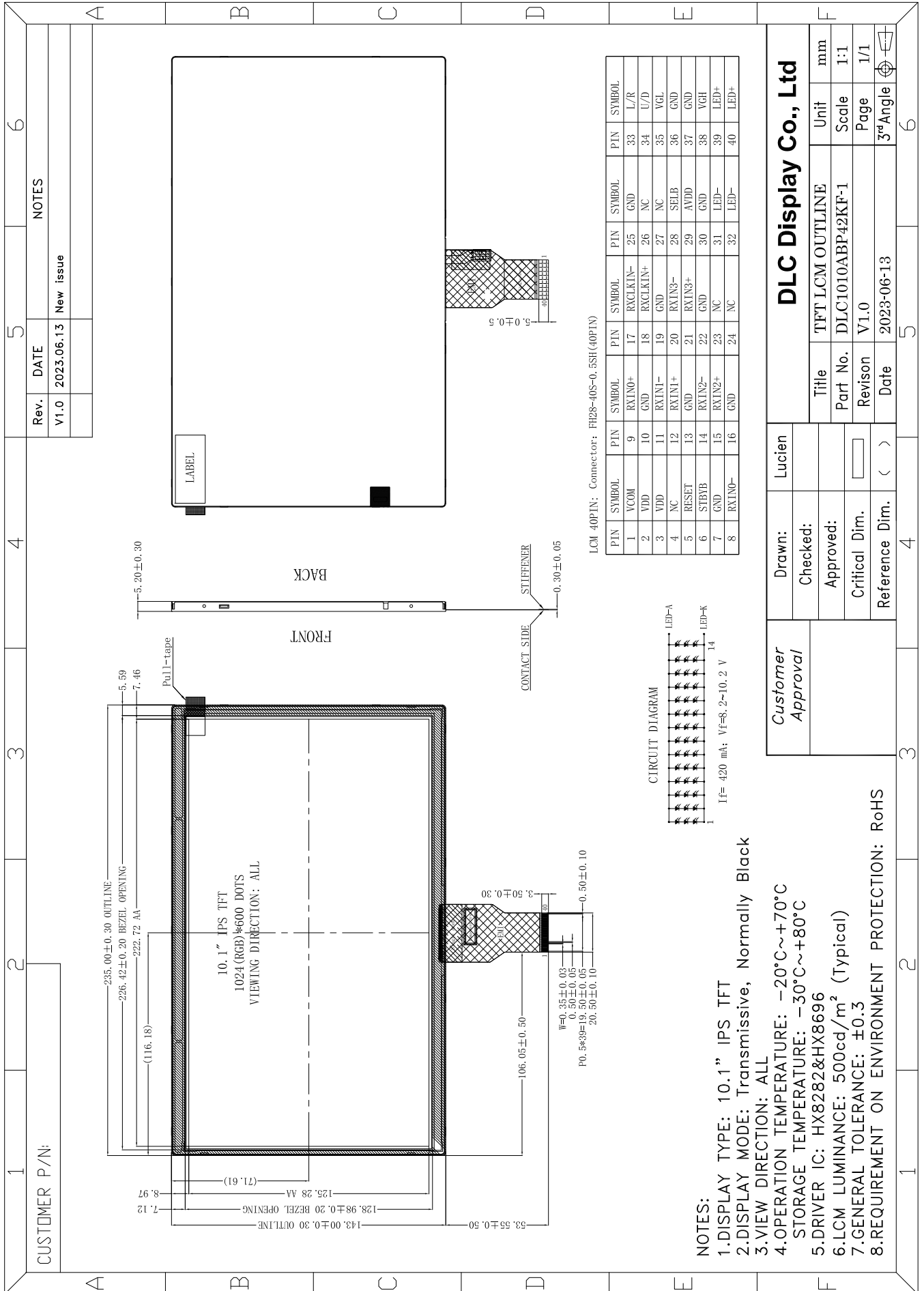


Outline Drawing



- NOTES:**
- 1.DISPLAY TYPE: 10.1" IPS TFT
 - 2.DISPLAY MODE: Transmissive, Normally Black
 - 3.VIEW DIRECTION: ALL
 - 4.OPERATION TEMPERATURE: -20°C~+70°C
STORAGE TEMPERATURE: -30°C~+80°C
 - 5.DRIVER IC: HX8282&HX8696
 - 6.LCM LUMINANCE: 500cd/m² (Typical)
 - 7.GENERAL TOLERANCE: ±0.3
 - 8.REQUIREMENT ON ENVIRONMENT PROTECTION: RoHS