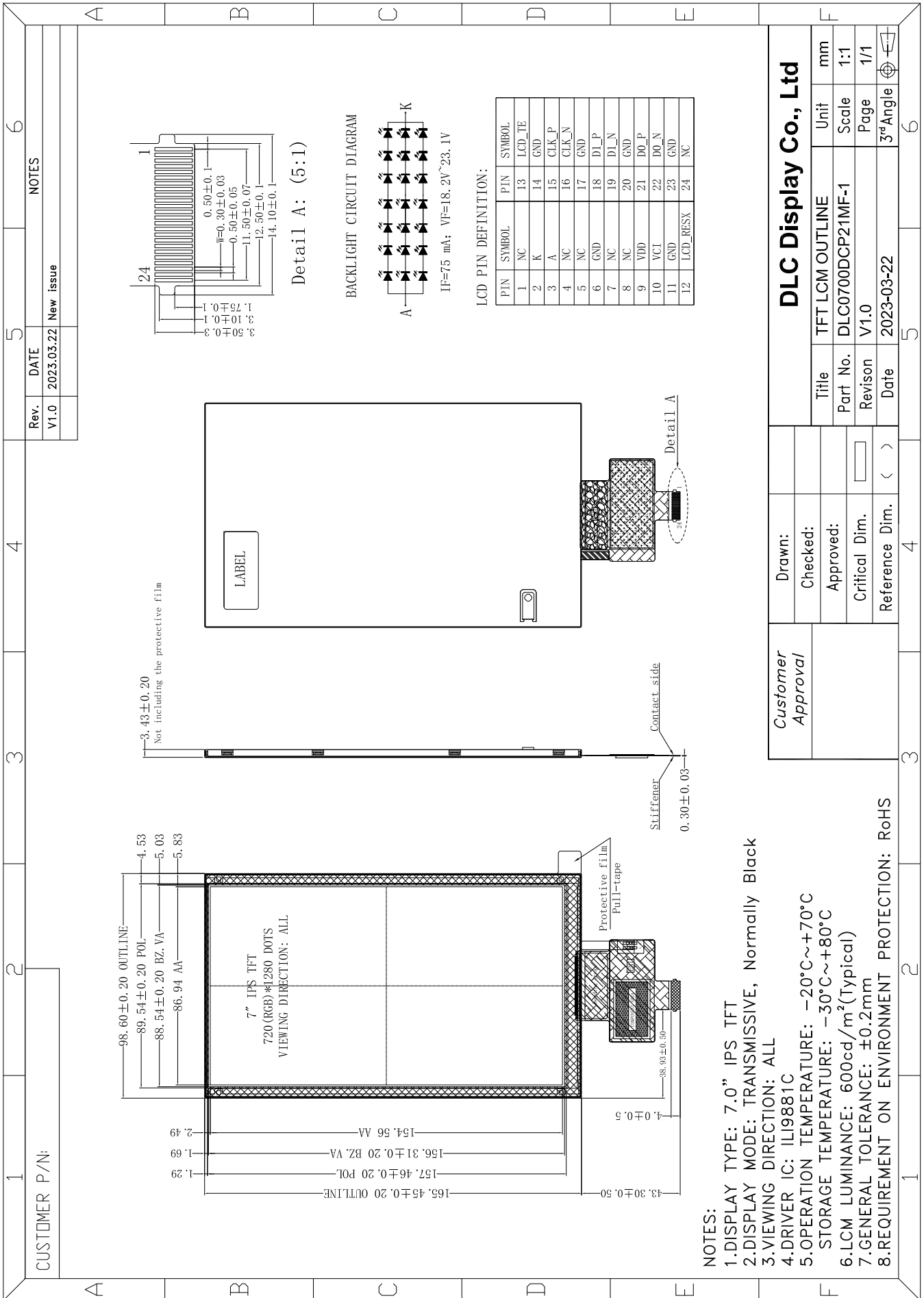


Outline Drawing



NOTES:

- 1.DISPLAY TYPE: 7.0" IPS TFT
- 2.DISPLAY MODE: TRANSMISSIVE, Normally Black
- 3.VIEWING DIRECTION: ALL
- 4.DRIVER IC: ILI9881C
- 5.OPERATION TEMPERATURE: -20°C ~ +70°C
STORAGE TEMPERATURE: -30°C ~ +80°C
- 6.LCM LUMINANCE: 600cd/m²(Typical)
- 7.GENERAL TOLERANCE: ±0.2mm
- 8.REQUIREMENT ON ENVIRONMENT PROTECTION: RoHS