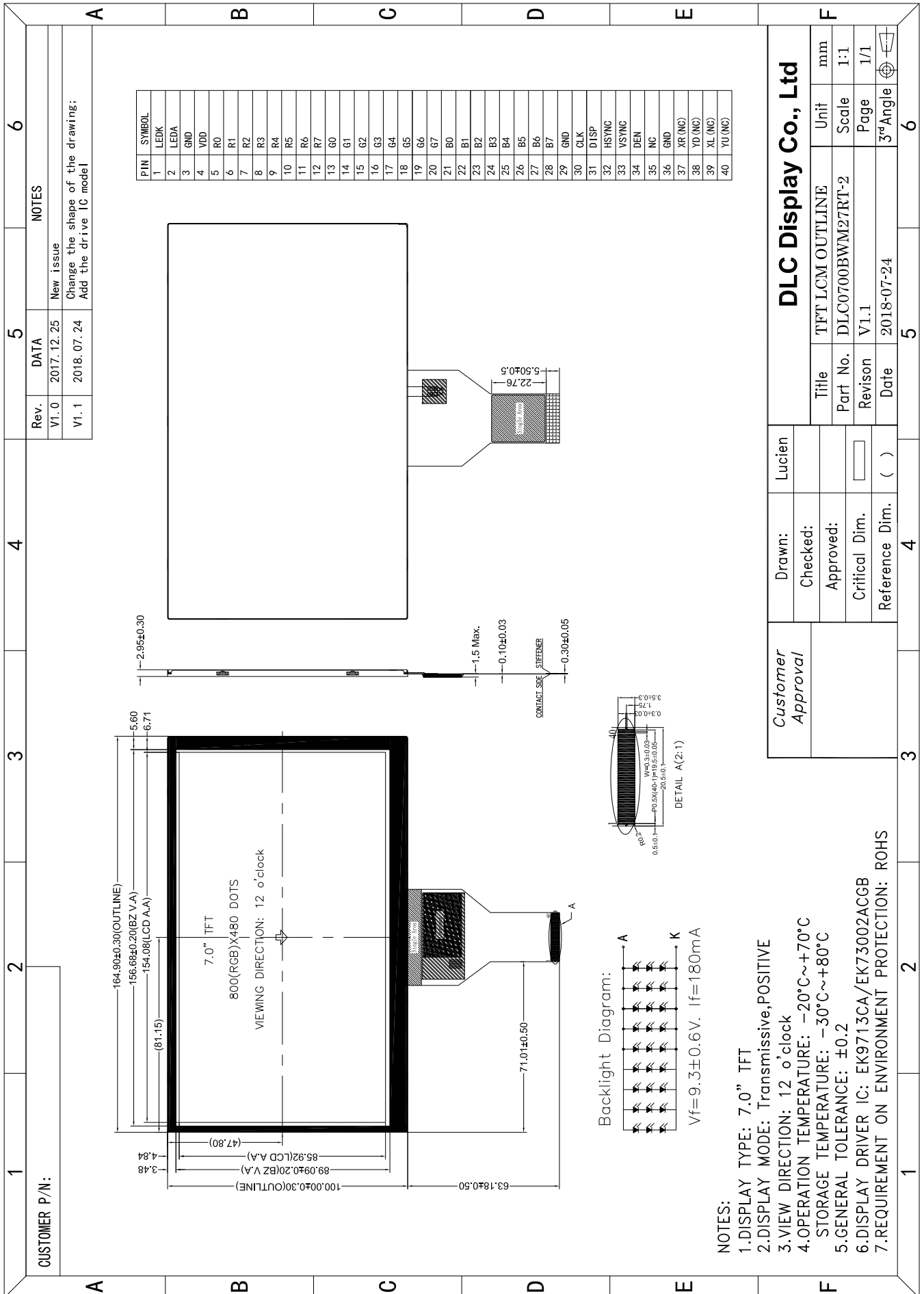


Outline Drawing



NOTES:

- 1.DISPLAY TYPE: 7.0" TFT
- 2.DISPLAY MODE: Transmissive, POSITIVE
- 3.VIEW DIRECTION: 12 o'clock
- 4.OPERATION TEMPERATURE: -20°C~+70°C
- 5.STORAGE TEMPERATURE: -30°C~+80°C
- 6.DISPLAY DRIVER IC: EK9713CA/EK73002ACGB
- 7.REQUIREMENT ON ENVIRONMENT PROTECTION: ROHS