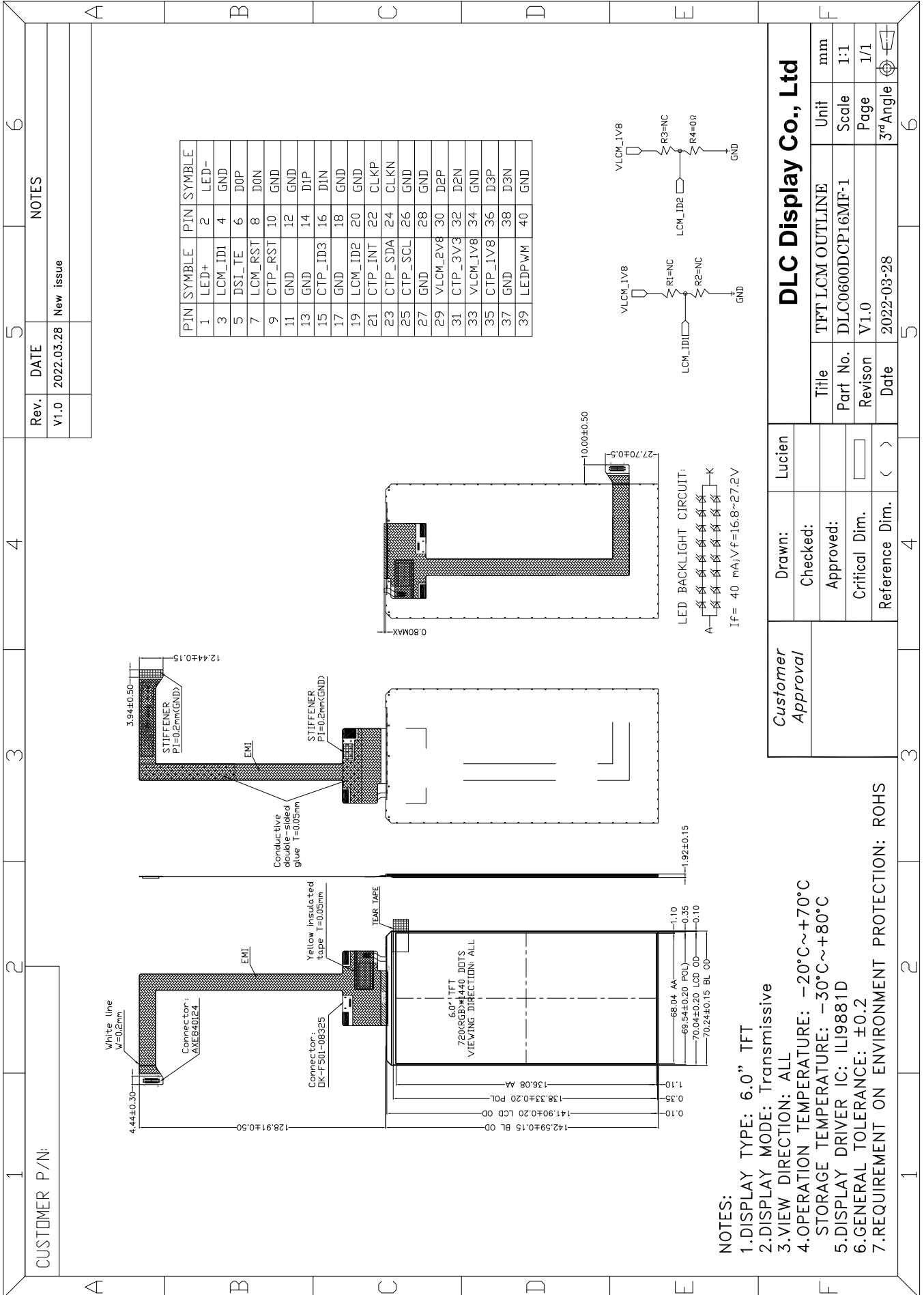


Outline Drawing



- NOTES:**
- 1.DISPLAY TYPE: 6.0" TFT
  - 2.DISPLAY MODE: Transmissive
  - 3.VIEW DIRECTION: ALL
  - 4.OPERATION TEMPERATURE: -20°C~+70°C
  - 5.DISPLAY DRIVER IC: ILI9881D
  - 6.GENERAL TOLERANCE: ±0.2
  - 7.REQUIREMENT ON ENVIRONMENT PROTECTION: ROHS