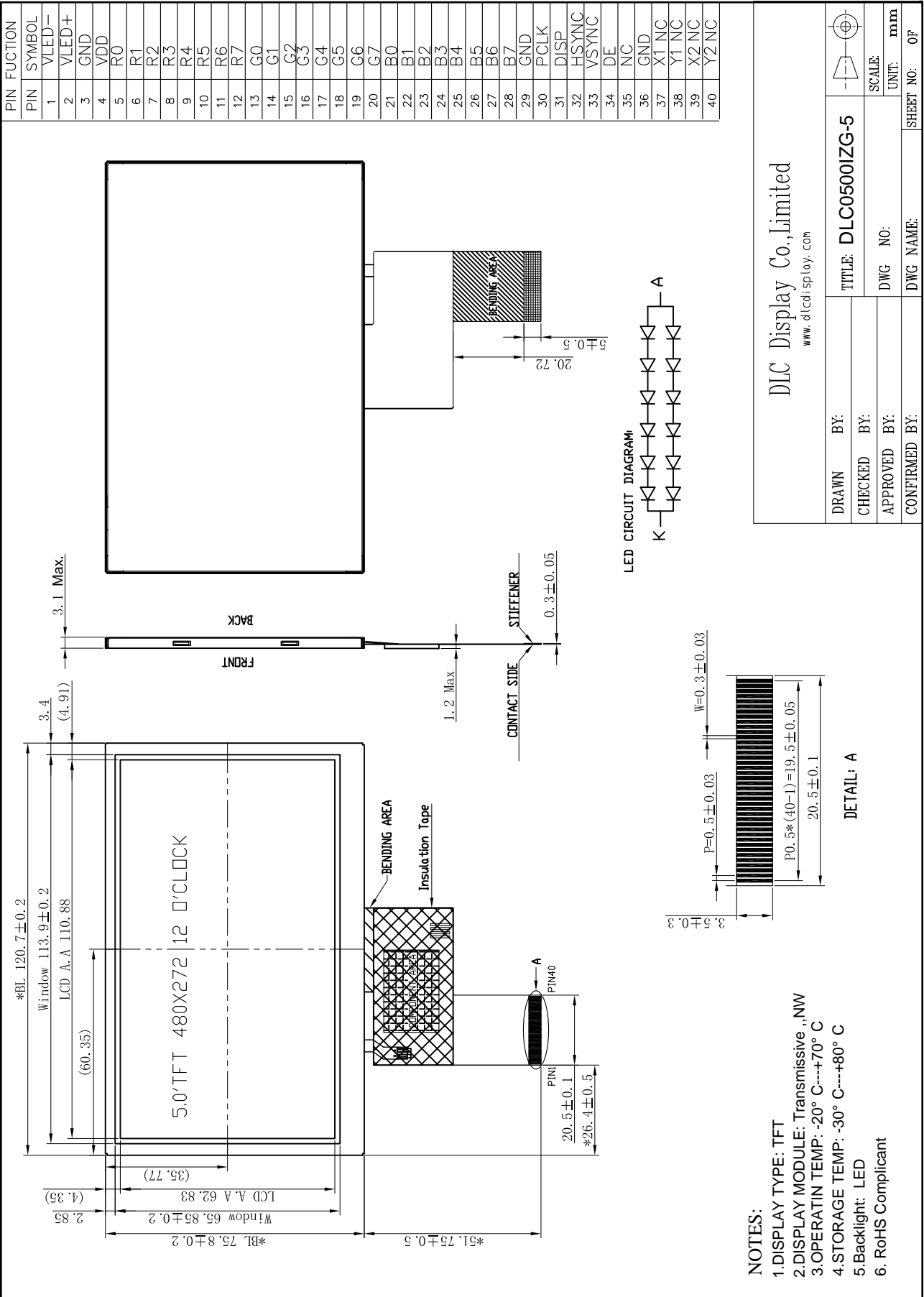
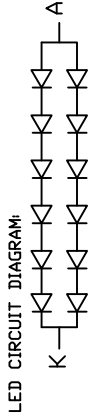


Outline Drawing



PIN	FUNCTION
1	VLED-
2	VLED+
3	GND
4	VDD
5	R0
6	R1
7	R2
8	R3
9	R4
10	R5
11	R6
12	R7
13	G0
14	G1
15	G2
16	G3
17	G4
18	G5
19	G6
20	G7
21	B0
22	B1
23	B2
24	B3
25	B4
26	B5
27	B6
28	B7
29	GND
30	CLK
31	DISP
32	HSYNC
33	VSYNC
34	DE
35	NC
36	GND
37	X1 NC
38	X1 NC
39	X2 NC
40	X2 NC



DLC Display Co., Limited
www.dlcdisplay.com

DRAWN BY:	TITLE: DLC0500IZG-5
CHECKED BY:	SCALE:
APPROVED BY:	DWG NO:
CONFIRMED BY:	DWG NAME:

UNIT: mm
SHEET NO: OF

- NOTES:**
- 1.DISPLAY TYPE: TFT
 - 2.DISPLAY MODULE: Transmissive „NW
 - 3.OPERATIN TEMP: -20° C---+70° C
 - 4.STORAGE TEMP: -30° C---+80° C
 - 5.Backlight: LED
 6. RoHS Compliant