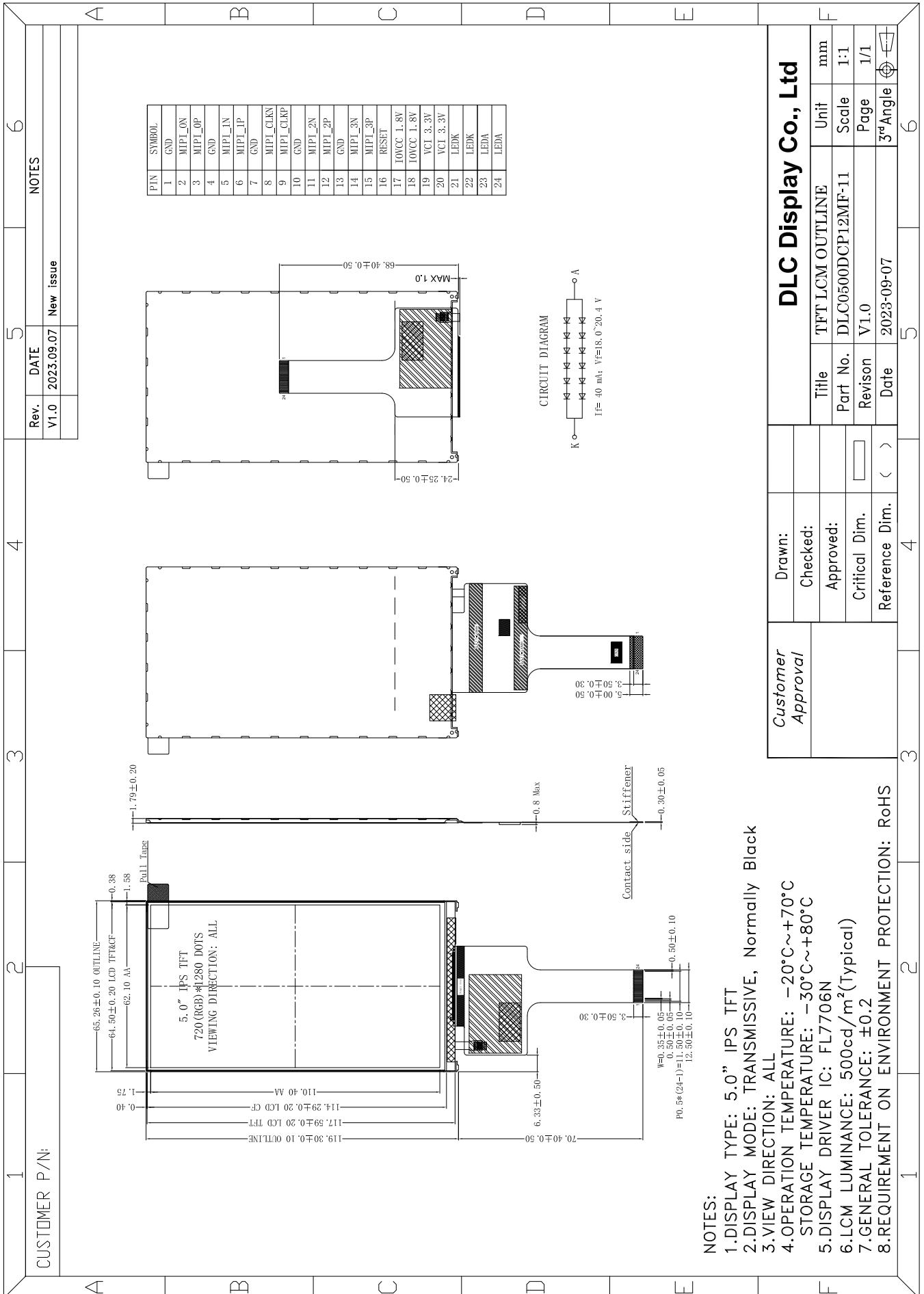


Outline Drawing



NOTES:

- 1.DISPLAY TYPE: 5.0" IPS TFT
- 2.DISPLAY MODE: TRANSMISSIVE, Normally Black
- 3.VIEW DIRECTION: ALL
- 4.OPERATION TEMPERATURE: -20°C~+70°C
STORAGE TEMPERATURE: -30°C~+80°C
- 5.DISPLAY DRIVER IC: FL7706N
- 6.LCM LUMINANCE: 500cd/m²(Typical)
- 7.GENERAL TOLERANCE: ±0.2
- 8.REQUIREMENT ON ENVIRONMENT PROTECTION: RoHS

Customer Approval				DLC Display Co., Ltd			
Drawn:		Title	TFT LCM OUTLINE	Unit	mm		
Checked:		Part No.	DLC0500DCP12MF-11	Scale	1:1		
Approved:		Revision	V1.0	Page	1/1		
Critical Dim.		Date	2023-09-07	3 rd Angle			
Reference Dim.							