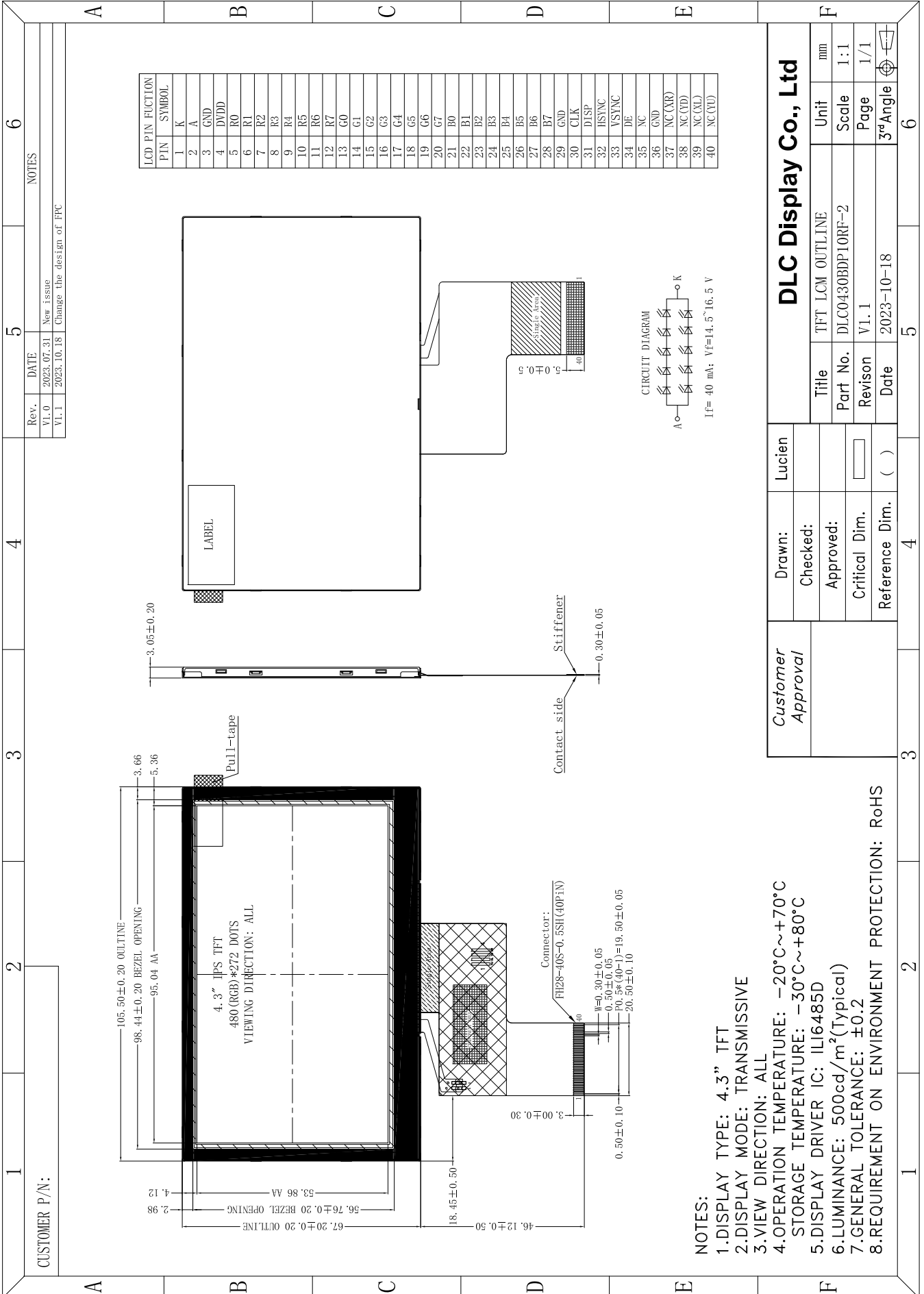


Outline Drawing



- NOTES:**
- 1.DISPLAY TYPE: 4.3" TFT
 - 2.DISPLAY MODE: TRANSMISSIVE
 - 3.VIEW DIRECTION: ALL
 - 4.OPERATION TEMPERATURE: -20°C~+70°C
 - 5.DISPLAY DRIVER IC: ILI6485D
 - 6.LUMINANCE: 500cd/m²(Typical)
 - 7.GENERAL TOLERANCE: ±0.2
 - 8.REQUIREMENT ON ENVIRONMENT PROTECTION: RoHS