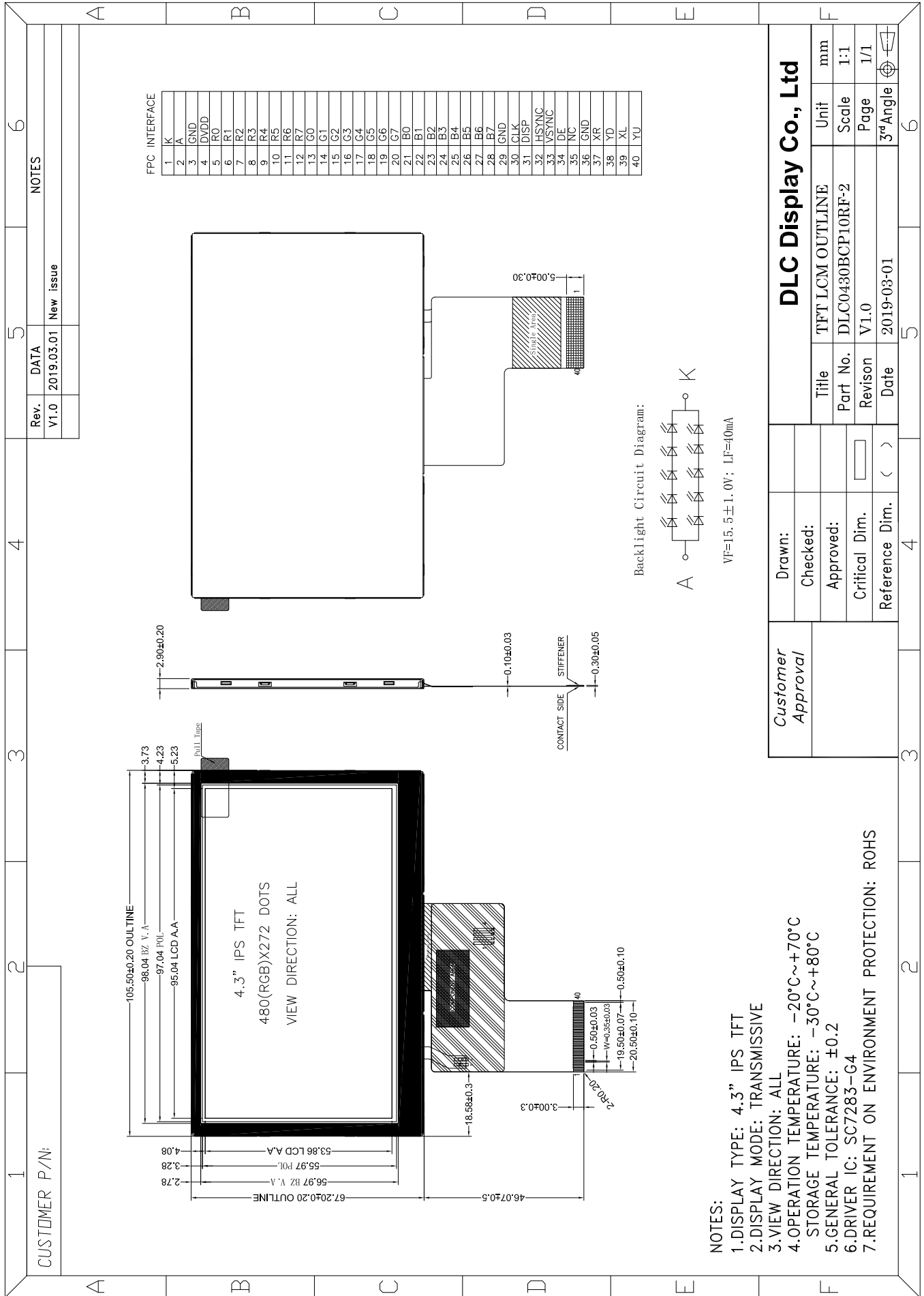


Outline Drawing



- NOTES:**
- 1.DISPLAY TYPE: 4.3" IPS TFT
 - 2.DISPLAY MODE: TRANSMISSIVE
 - 3.VIEW DIRECTION: ALL
 - 4.OPERATION TEMPERATURE: -20°C~+70°C
 - 5.STORAGE TEMPERATURE: -30°C~+80°C
 - 6.GENERAL TOLERANCE: ±0.2
 - 7.DRIVER IC: SC7283-G4
- 7.REQUIREMENT ON ENVIRONMENT PROTECTION: ROHS