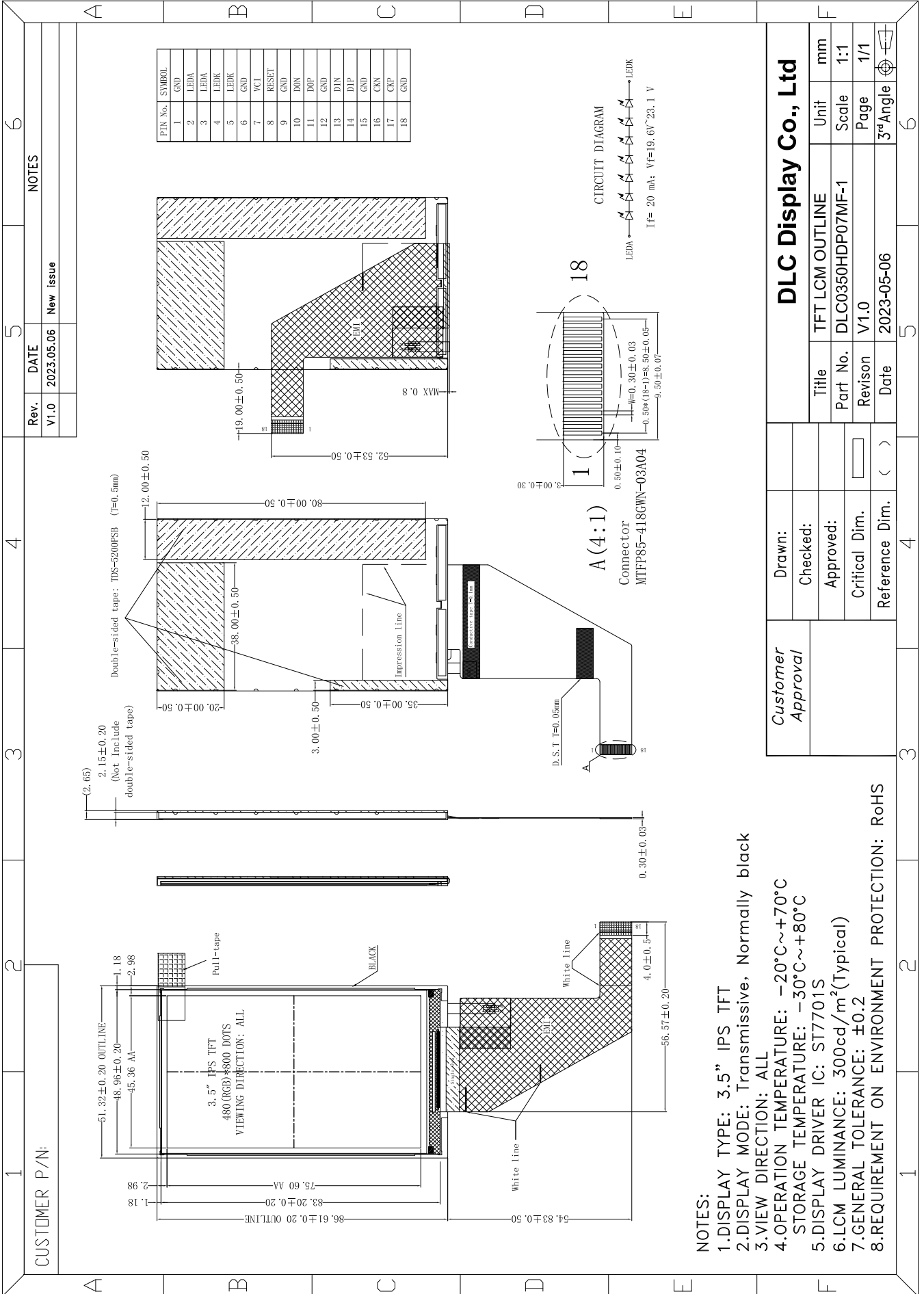


Outline Drawing



- NOTES:**
- 1.DISPLAY TYPE: 3.5" IPS TFT
  - 2.DISPLAY MODE: Transmissive, Normally black
  - 3.VIEW DIRECTION: ALL
  - 4.OPERATION TEMPERATURE: -20°C~+70°C
  - 5.DISPLAY DRIVER IC: ST7701S
  - 6.LCM LUMINANCE: 300cd/m<sup>2</sup>(Typical)
  - 7.GENERAL TOLERANCE: ±0.2
  - 8.REQUIREMENT ON ENVIRONMENT PROTECTION: RoHS

Customer Approval	Drawn:	DLC Display Co., Ltd			
	Checked:	Title	TFT LCM OUTLINE	Unit	mm
	Approved:	Part No.	DLC0350HDP07MF-1	Scale	1:1
	Critical Dim.	Revision	V1.0	Page	1/1
	Reference Dim.	Date	2023-05-06	3 <sup>rd</sup> Angle	