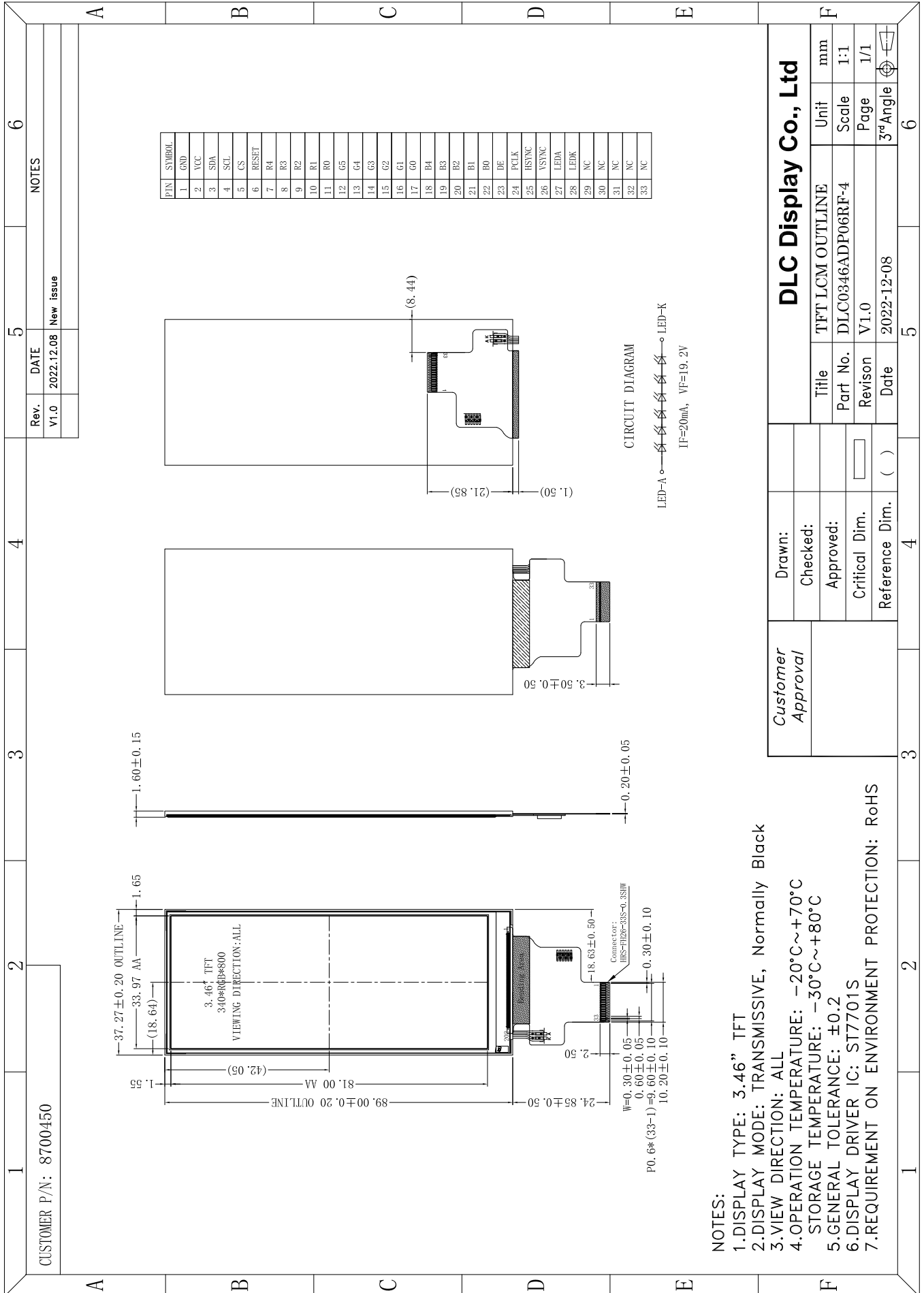


Outline Drawing



- NOTES:**
- 1.DISPLAY TYPE: 3.46" TFT
  - 2.DISPLAY MODE: TRANSMISSIVE, Normally Black
  - 3.VIEW DIRECTION: ALL
  - 4.OPERATION TEMPERATURE: -20°C~+70°C
  - 5.GENERAL TOLERANCE: ±0.2
  - 6.DISPLAY DRIVER IC: ST7701S
  - 7.REQUIREMENT ON ENVIRONMENT PROTECTION: RoHS

<i>Customer Approval</i>	Drawn:	<b>DLC Display Co., Ltd</b>		
	Checked:			
	Approved:			
	Critical Dim.			
	Reference Dim.			
	Title	TFT LCM OUTLINE	Unit	mm
	Part No.	DLC0346ADP06RF-4	Scale	1:1
	Revision	V1.0	Page	1/1
	Date	2022-12-08	3 <sup>rd</sup> Angle	

CUSTOMER P/N: 8700450