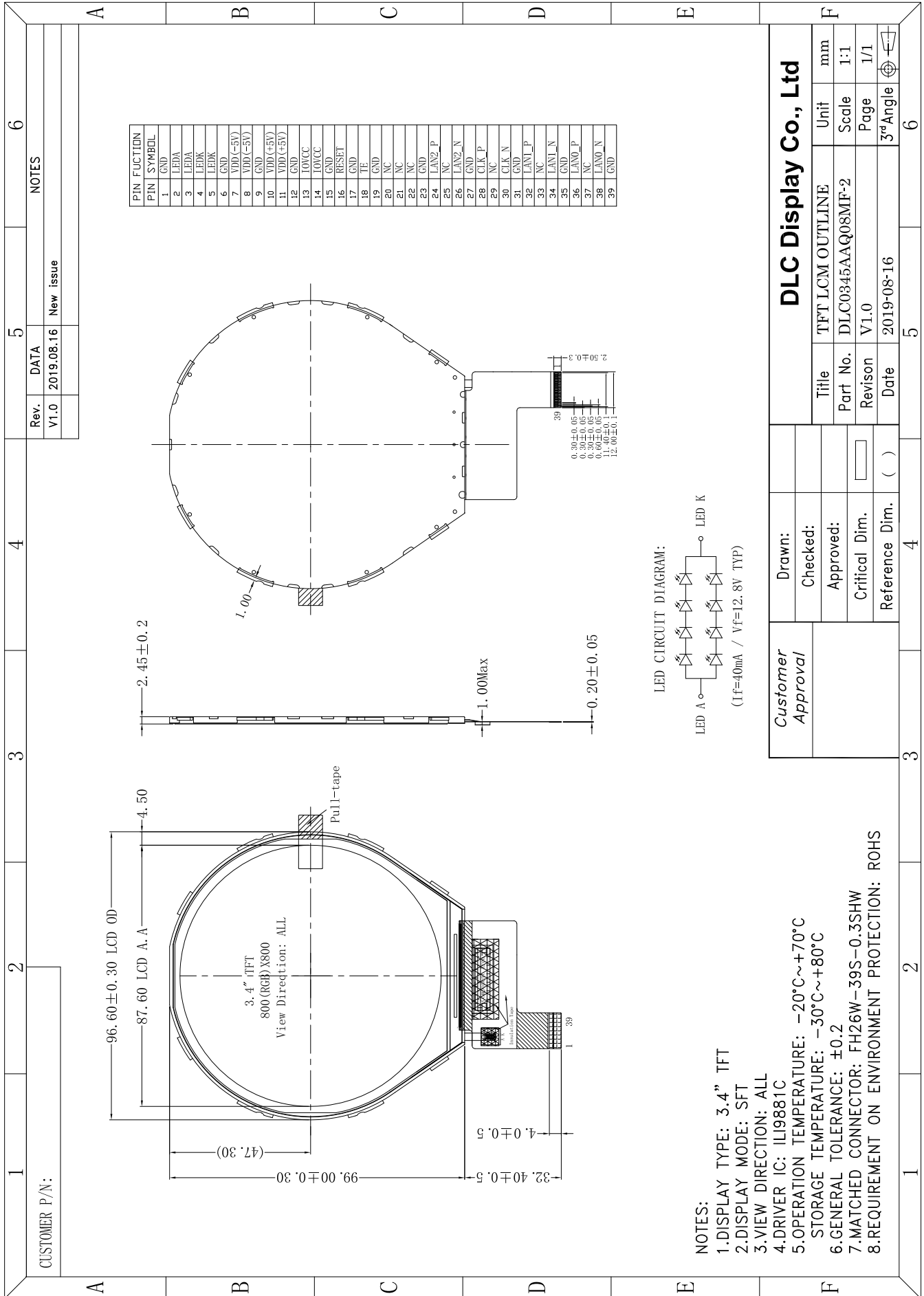


Outline Drawing



- NOTES:**
- 1.DISPLAY TYPE: 3.4" TFT
 - 2.DISPLAY MODE: SFT
 - 3.VIEW DIRECTION: ALL
 - 4.DRIVER IC: ILI9881C
 - 5.OPERATION TEMPERATURE: -20°C~+70°C
 - 6.STORAGE TEMPERATURE: -30°C~+80°C
 - 7.GENERAL TOLERANCE: ±0.2
 - 8.MATCHED CONNECTOR: FH26W-39S-0.3SHW
 - 8.REQUIREMENT ON ENVIRONMENT PROTECTION: ROHS

Customer Approval		DLC Display Co., Ltd	
Drawn:		Title	TFT LCM OUTLINE
Checked:		Part No.	DLC0345AAQ08MF-2
Approved:		Revision	V1.0
Critical Dim.		Date	2019-08-16
Reference Dim.	()	Unit	mm
		Scale	1:1
		Page	1/1
		3rd Angle	☑