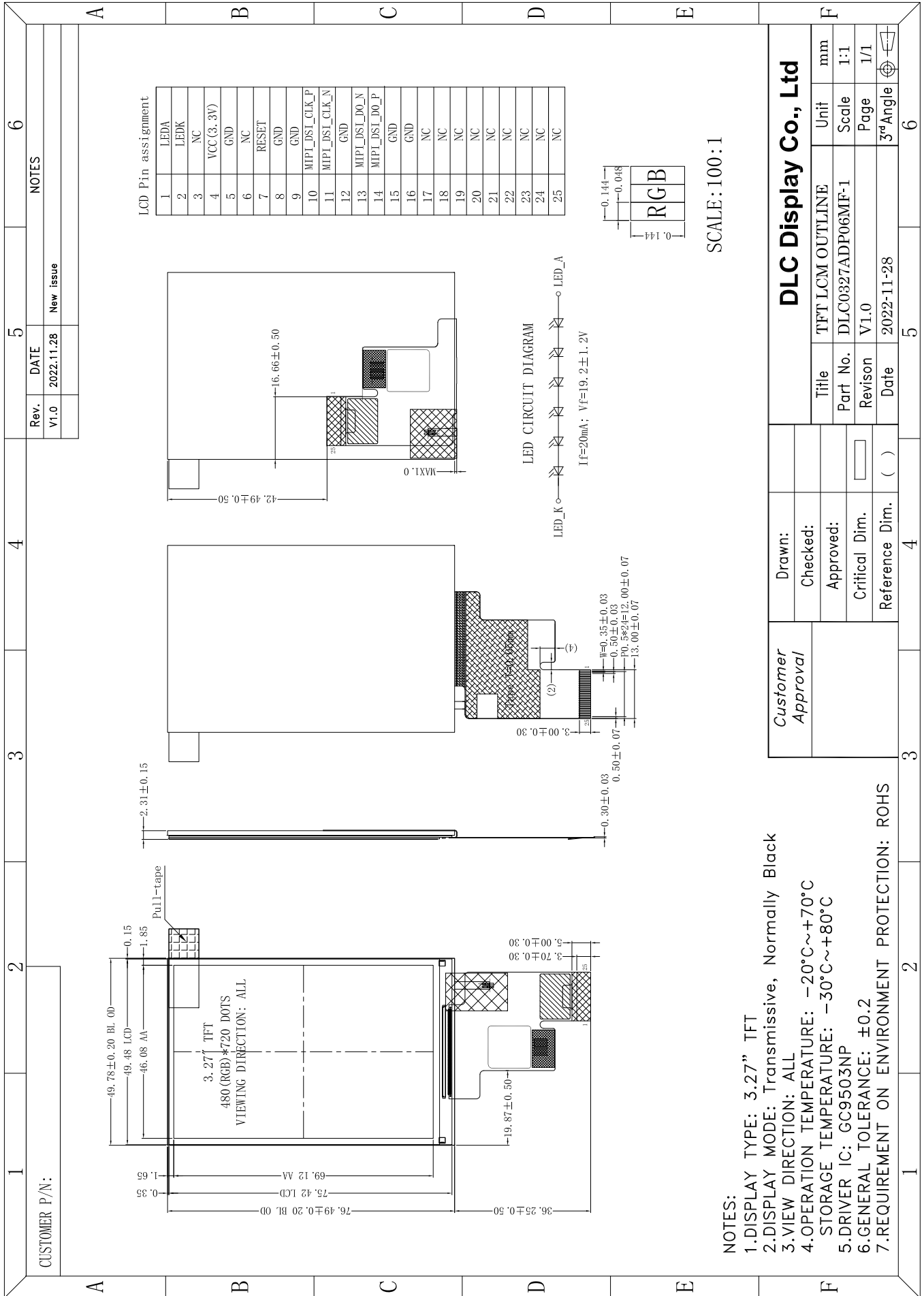


Outline Drawing



SCALE: 100:1

- NOTES:
- 1.DISPLAY TYPE: 3.27" TFT
 - 2.DISPLAY MODE: Transmissive, Normally Black
 - 3.VIEW DIRECTION: ALL
 - 4.OPERATION TEMPERATURE: -20°C~+70°C
 - 5.STORAGE TEMPERATURE: -30°C~+80°C
 - 6.DRIVER IC: GC9503NP
 - 7.GENERAL TOLERANCE: ±0.2
 - 7.REQUIREMENT ON ENVIRONMENT PROTECTION: ROHS

Customer Approval	Drawn:	DLC Display Co., Ltd			
	Checked:	Title	TFT LCM OUTLINE	Unit	mm
	Approved:	Part No.	DLC0327ADP06MF-1	Scale	1:1
	Critical Dim.	Revision	V1.0	Page	1/1
	Reference Dim.	Date	2022-11-28	3rd Angle	