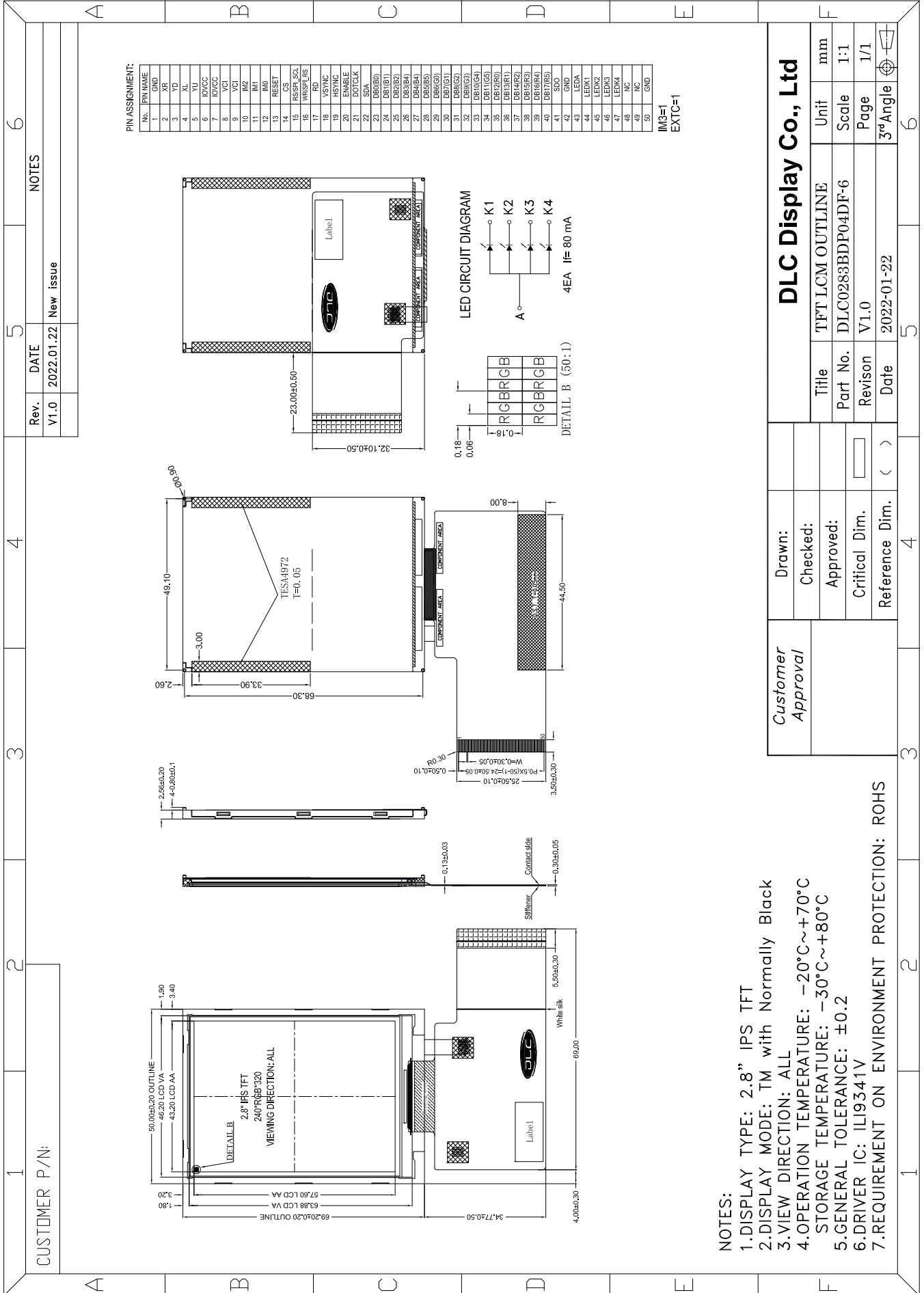


Outline Drawing



- NOTES:**
- 1.DISPLAY TYPE: 2.8" IPS TFT
 - 2.DISPLAY MODE: TM with Normally Black
 - 3.VIEW DIRECTION: ALL
 - 4.OPERATION TEMPERATURE: -20°C~+70°C
 - 5.STORAGE TEMPERATURE: -30°C~+80°C
 - 6.GENERAL TOLERANCE: ±0.2
 - 7.DRIVER IC: ILI9341V
 - 7.REQUIREMENT ON ENVIRONMENT PROTECTION: ROHS

Customer Approval		DLC Display Co., Ltd	
Drawn:		Title	TFT LCM OUTLINE
Checked:		Part No.	DLC0283BDP04DF-6
Approved:		Revision	V1.0
Critical Dim.		Date	2022-01-22
Reference Dim.	(>)	Unit	mm
		Scale	1:1
		Page	1/1
		3rd Angle	