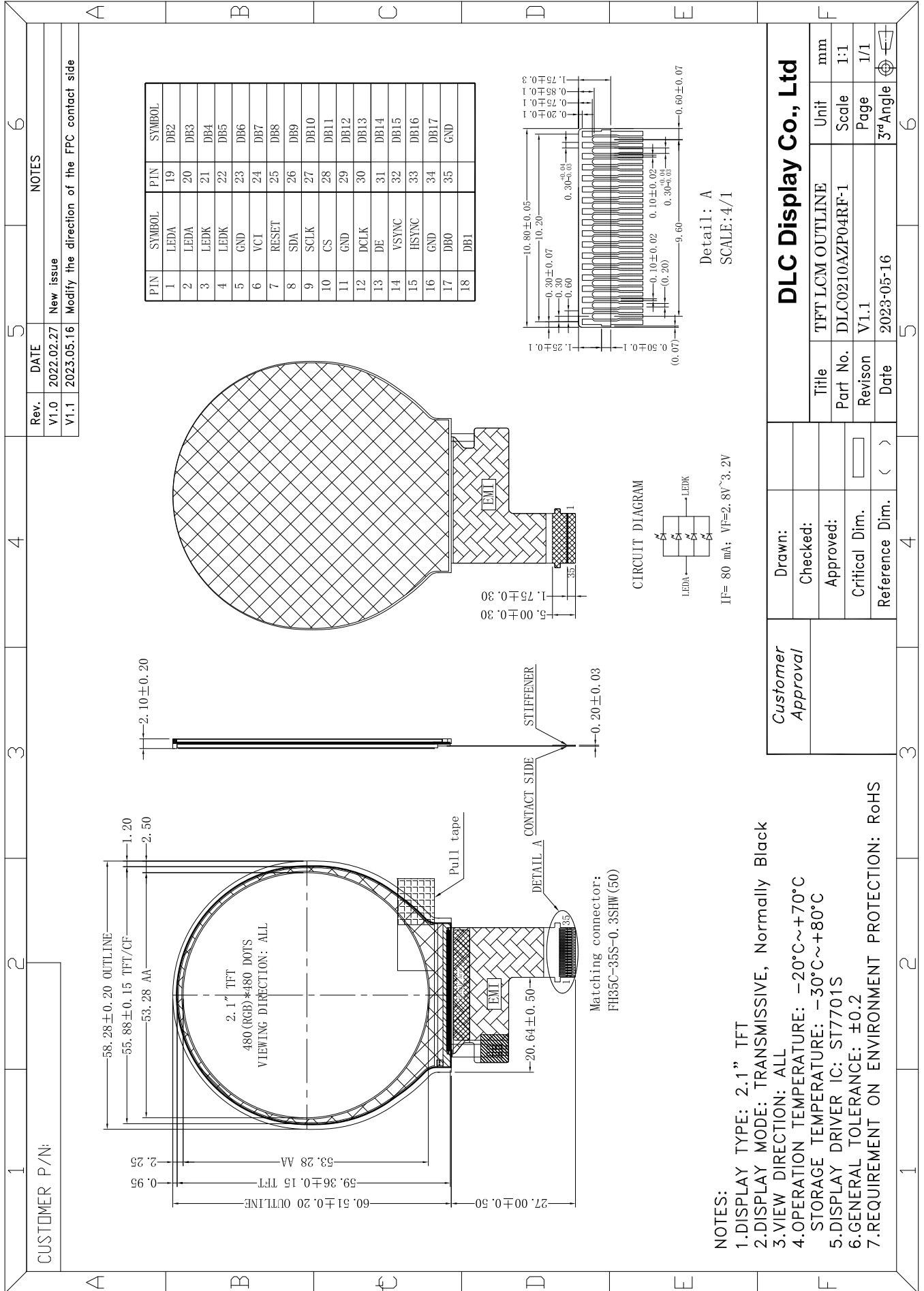


Outline Drawing



CUSTOMER P/N:

- NOTES:
- 1.DISPLAY TYPE: 2.1" TFT
 - 2.DISPLAY MODE: TRANSMISSIVE, Normally Black
 - 3.VIEW DIRECTION: ALL
 - 4.OPERATION TEMPERATURE: -20°C~+70°C
STORAGE TEMPERATURE: -30°C~+80°C
 - 5.DISPLAY DRIVER IC: ST7701S
 - 6.GENERAL TOLERANCE: ±0.2
 - 7.REQUIREMENT ON ENVIRONMENT PROTECTION: RoHS

DLC Display Co., Ltd	
Customer Approval	TFT LCM OUTLINE
Drawn:	Title
Checked:	Part No. DLC0210AZP04RF-1
Approved:	Revision V1.1
Critical Dim.	Date 2023-05-16
Reference Dim.	3rd Angle
Unit	mm
Scale	1:1
Page	1/1