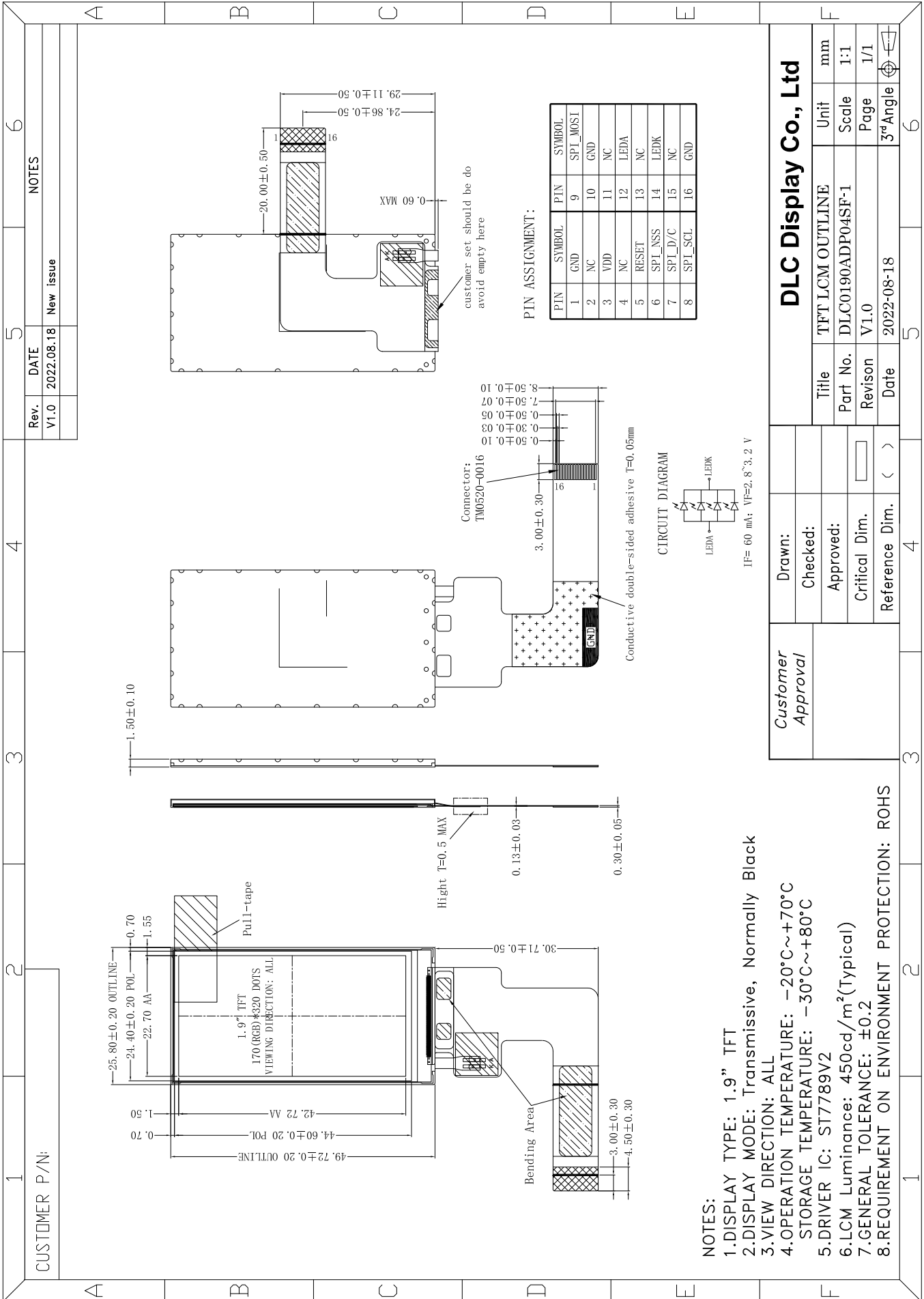


Outline Drawing



NOTES:

- 1.DISPLAY TYPE: 1.9" TFT
- 2.DISPLAY MODE: Transmissive, Normally Black
- 3.VIEW DIRECTION: ALL
- 4.OPERATION TEMPERATURE: -20°C~+70°C
STORAGE TEMPERATURE: -30°C~+80°C
- 5.DRIVER IC: ST7789V2
- 6.LCM Luminance: 450cd/m²(Typical)
- 7.GENERAL TOLERANCE: ±0.2
- 8.REQUIREMENT ON ENVIRONMENT PROTECTION: ROHS

<i>Customer Approval</i>	Drawn:				
	Checked:				
	Approved:				
	Critical Dim.				
	Reference Dim.	< >			
DLC Display Co., Ltd		Title	TFT LCM OUTLINE	Unit	mm
		Part No.	DLC0190ADP04SF-1	Scale	1:1
		Revision	V1.0	Page	1/1
		Date	2022-08-18	3 rd Angle	