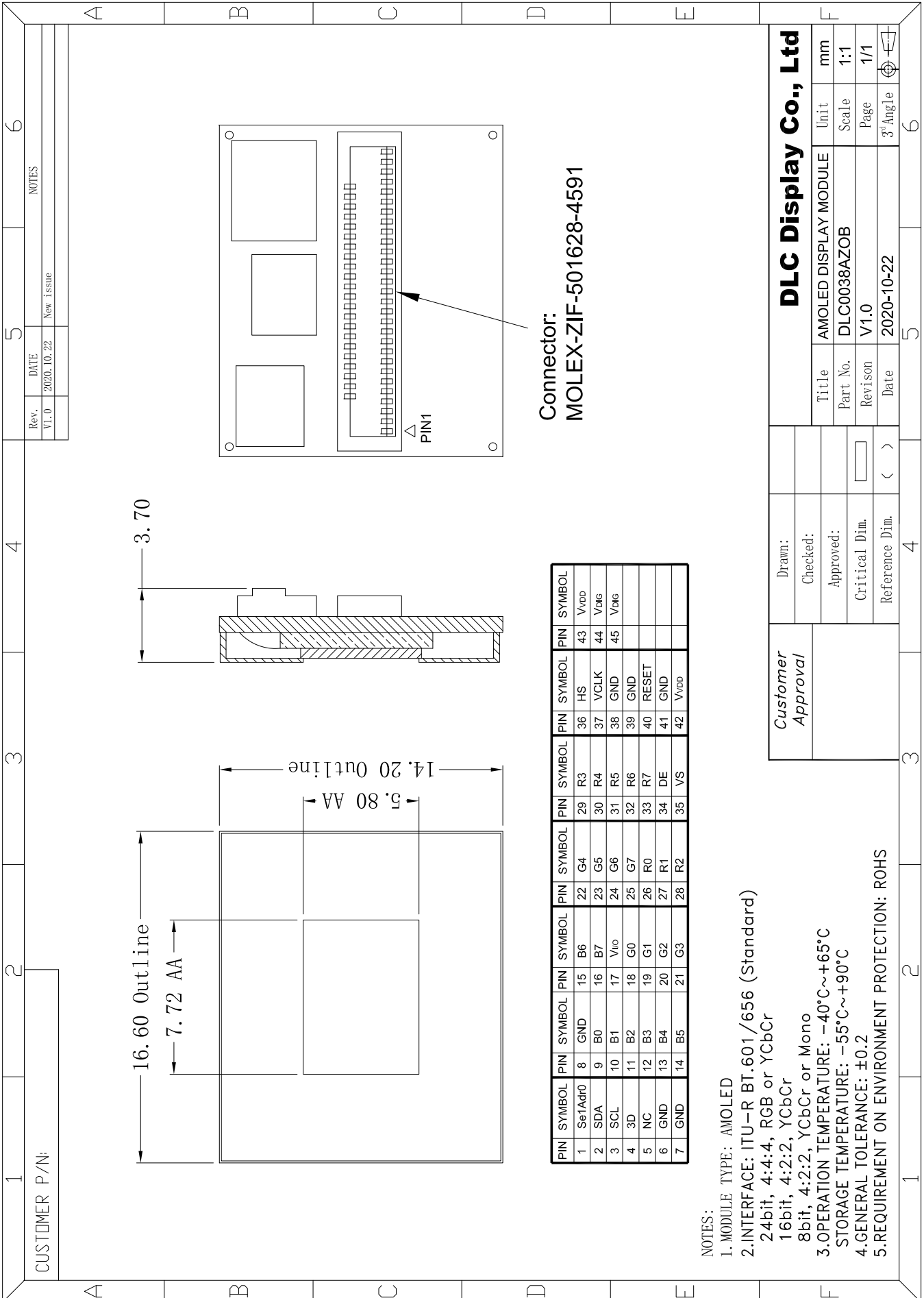


Outline Drawing



NOTES:

1. MODULE TYPE: AMOLED
2. INTERFACE: ITU-R BT.601/656 (Standard)
24bit, 4:4:4, RGB or YCbCr
16bit, 4:2:2, YCbCr
8bit, 4:2:2, YCbCr or Mono
3. OPERATION TEMPERATURE: -40°C~+65°C
STORAGE TEMPERATURE: -55°C~+90°C
4. GENERAL TOLERANCE: ±0.2
5. REQUIREMENT ON ENVIRONMENT PROTECTION: ROHS

Customer Approval		Drawn:		Title		Unit	
		Checked:		AMOLED DISPLAY MODULE		mm	
		Approved:		Part No.		Scale	
		Critical Dim.		DLC0038AZOB		1:1	
		Reference Dim.		Revision		Page	
				V1.0		1/1	
				Date		3° Angle	
				2020-10-22		6	

DLC Display Co., Ltd

Connector:
MOLEX-ZIF-501628-4591

CUSTOMER P/N:

NOTES

Rev.	DATE	Notes
V1.0	2020.10.22	New Issue