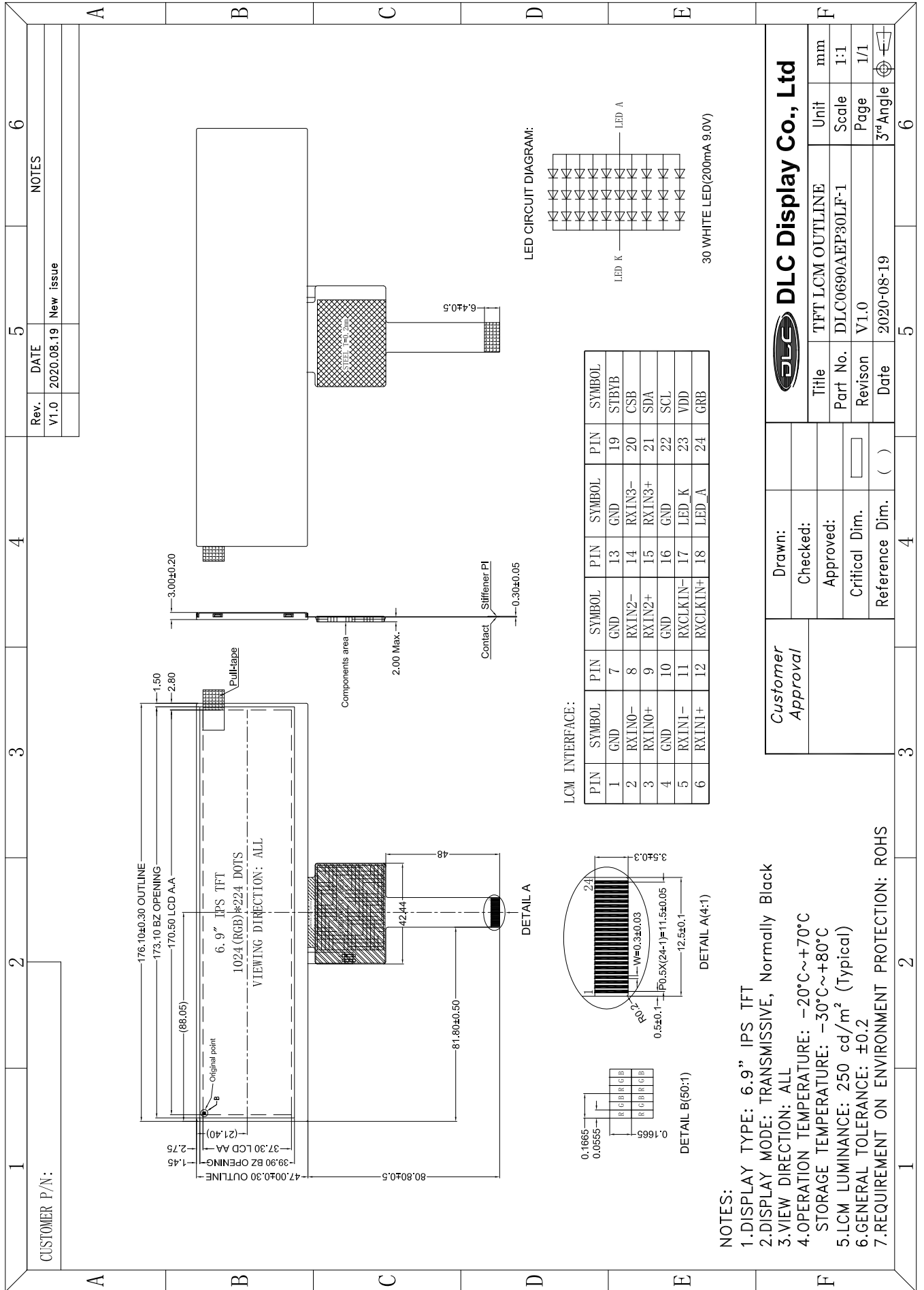


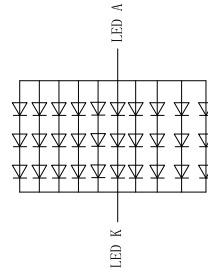
Outline Drawing



LCM INTERFACE:

PIN	SYMBOL	PIN	SYMBOL	PIN	SYMBOL	PIN	SYMBOL
1	GND	7	GND	13	GND	19	STBYB
2	RXIN0-	8	RXIN2-	14	RXIN3-	20	GSB
3	RXIN0+	9	RXIN2+	15	RXIN3+	21	SDA
4	GND	10	GND	16	GND	22	SCL
5	RXIN1-	11	RXCLKIN-	17	LED K	23	VDD
6	RXIN1+	12	RXCLKIN+	18	LED_A	24	GRB

LED CIRCUIT DIAGRAM:



30 WHITE LED(200mA 9.0V)

<b>Customer Approval</b>		<b>Drawn:</b>		<b>DLC Display Co., Ltd</b>	
		<b>Checked:</b>		TFT LCM OUTLINE	
		<b>Approved:</b>		Unit mm	
		<b>Critical Dim.</b>		Scale 1:1	
		<b>Reference Dim.</b>		Page 1/1	
		( )		Date 2020-08-19	
				3rd Angle	
				6	

NOTES:

- 1.DISPLAY TYPE: 6.9" IPS TFT
- 2.DISPLAY MODE: TRANSMISSIVE, Normally Black
- 3.VIEW DIRECTION: ALL
- 4.OPERATION TEMPERATURE: -20°C~+70°C  
STORAGE TEMPERATURE: -30°C~+80°C
- 5.LCM LUMINANCE: 250 cd/m<sup>2</sup> (Typical)
- 6.GENERAL TOLERANCE: ±0.2
- 7.REQUIREMENT ON ENVIRONMENT PROTECTION: ROHS