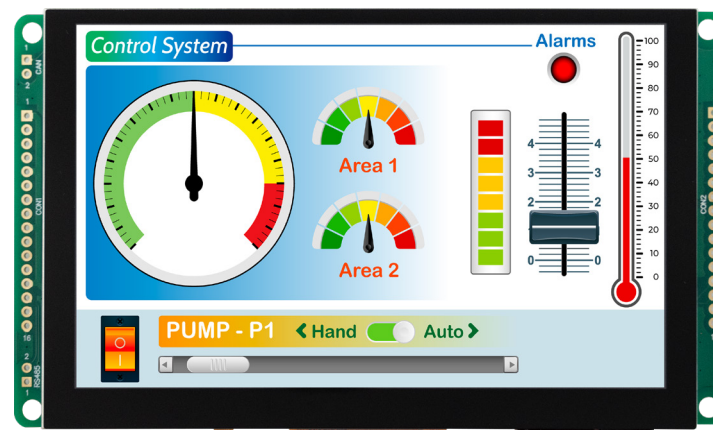


NEW CAN Bus High Brightness TFT Display with PCAP

Winstar introduced the new 5,0" Smart Display CAN series TFT display is defined as a slave drive, controlled by a master device via CAN bus command. This module is integrated with a standard TFT module and a 4-layer FR4 PCBA with built-in firmware. It is easy-to-use with allows you to develop projects rapidly in a cost-effective way. This module can also be used on multiple host platforms: computer, MCU, Raspberry Pi.



Operational Temperature Range of -30°C to +80°C

Storage Temperature Range of -30°C to +80°C.

WLOF00050000FGAACSA01

Item	Contents	Unit
Operating Voltage	5	Vdc
Communication Interface	CAN bus differential ± 3.3	Vpp
MCU	STM32F750	N/A
Flash Memory	16	MB
SDRAM Frequency	108	MHz
LCD Display Size	5,0	inch
Dot Matrix	800 × 3(RGB) × 480	dot
Module Dimension	132.7(W) × 75.8(H) × 12.5	mm
Active Area	108(W) × 64.8 (H)	mm
Dot Pitch	0.135(W) × 0.135(H)	mm
Brightness	Min: 650; Typ: 750	cd/m ²
LCD Type	TFT, Normally White, Transmissive	----
View Direction	80/80/80/80 (IPS)	----
Aspect Ratio	5:3	----
Touch Panel	Projected Capacitive Touch (PCAP)	----
Surface	Glare	----